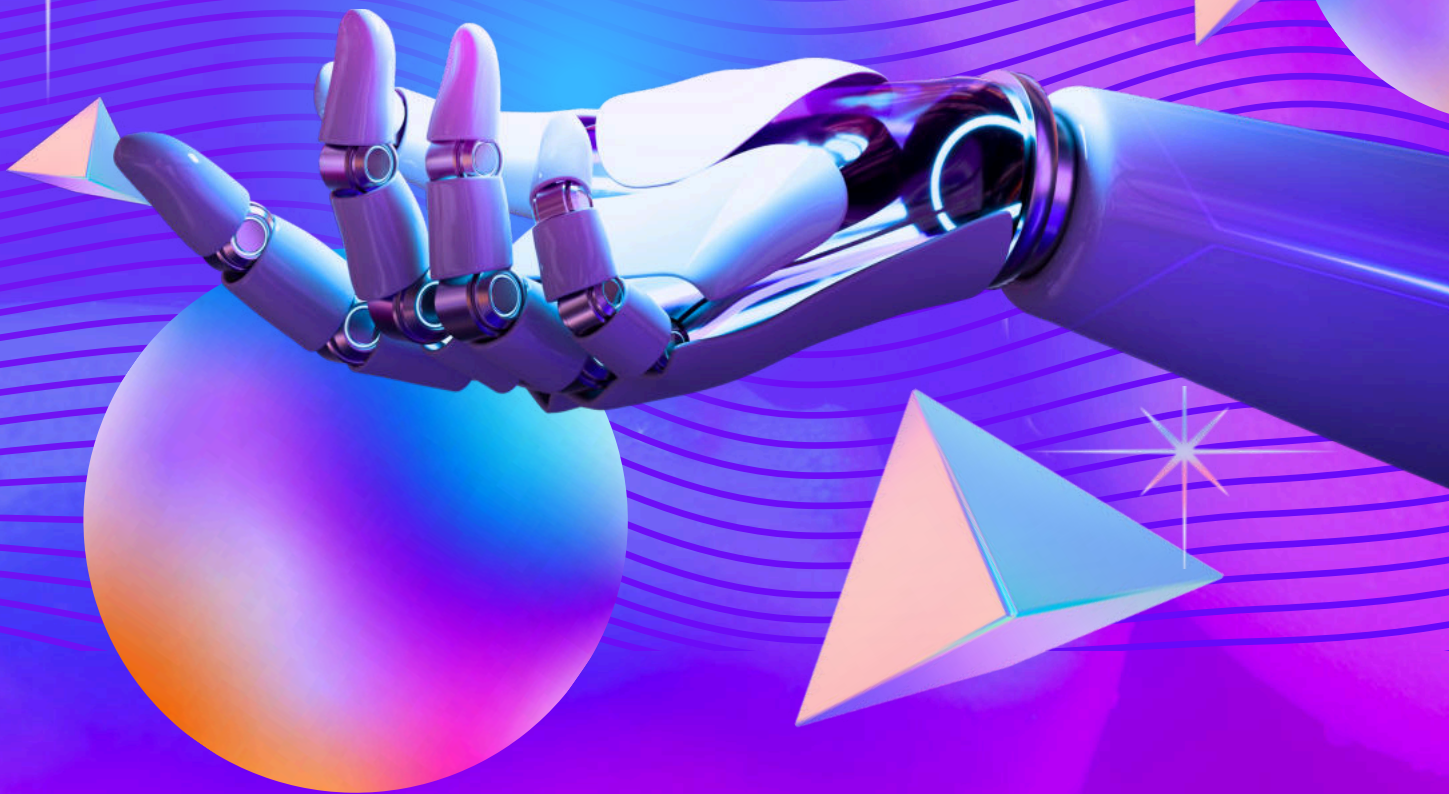


STUDENT IT PRESS

IT KALEIDOSCOPE

GEMINI AI



Program Incharge

Dr. Praveen Arora

Faculty Incharge

Dr. Priyanka Gandhi

Student Incharge

**Tanya Gera
Vaibhavi Sharma**

Introduction to Conversational A.I.

Humans have used language and conversation as a bonding mechanism ever since the two became a thing, they may even be as old as humanity itself. Not only is it the premise for all relationships- living and otherwise, it is an essential tool to convey oneself and one's needs. This is no different when it comes to the conversations between an Artificial Intelligence and a human.



Conversational Artificial Intelligence is just that, an AI to have a conversation with, it is also simultaneously way more than that. This version of AI imitates the user's speech patterns, expressions and generic mannerisms to return the best, most feasible output possible. Aimed at simulating a human conversation, one that works towards problem-solving, and general assistance, there exists immense potential of revolutionization in each field, when technology is implemented. It engages with users in the most natural language possible for a machine. These systems are programmed to leverage the knowledge gained from millions of re-runs and training on the same data set for optimal output generation.

Conversational AI already exists among us and has done so for quite a while, but only now it has begun to become more humane and conversational.

Virtual chatbots, assistants, etc are probably the starter pack examples of its implementations. But nowadays AIs are embedded into about every app there is, whether it be messaging apps like WhatsApp or Messenger, social media apps like of Meta- Facebook, Instagram, and even Snapchat has a personal customizable AI for each individual user to ask about anything, under the recommended safety guidelines, of course. Then there are also especially curated artificially intelligent systems like ChatGPT, Gemini (earlier known as Bard), Microsoft and GitHub's Copilot, etc., although, one may argue that these are Generative AIs, they are still executing two-way interactions to aid the user, just making them more authentic and creative.

With AI algorithms and a better understanding of them, more human-like interactions with humane ethics and empathy are expected to come up. While most AIs now work particularly on text, and images, in the future multi-model capabilities, are being integrated into data sets for a seamless transition between various modes.

Every progress, invention, and new concept extends the boundaries, overpassing the present borders of knowledge and bringing up an entirely new concept beyond the scope of the current understanding. The future of human-computer interactions awaits change in ways that are difficult to imagine.

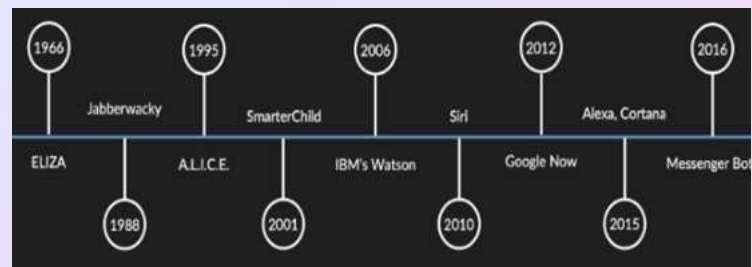


Evolution of Conversational A.I.

The development of conversational AI has been an exciting path, characterized by important technological breakthroughs and an expanding comprehension of human communication. Conversational AI systems were initially quite basic, using simple rule-based techniques and scripted answers. However, conversational AI had a dramatic metamorphosis, developing into sophisticated systems that could hold natural language conversations with users as processing power and machine learning techniques advanced.

The creation of chatbots was one of the early turning points in the development of conversational AI. These early systems relied on pre-programmed responses created by developers and were mostly text-based. Despite their limitations, they set the stage for later, more sophisticated conversational bots. Chatbots got better at comprehending and producing responses that resembled those of humans as researchers in the fields of natural language processing (NLP) and machine learning dug deeper. Conversational AI was transformed with the introduction of neural network-based models, including recurrent neural networks (RNNs) and transformers. These approaches enabled machines to produce and parse text with previously unheard-of levels of context sensitivity and fluency. Conversational AI systems might be able to comprehend the subtleties of human language and provide more pertinent and cogent responses by using strategies like sequence-to-sequence learning and attention processes. In particular, GPT represented a critical advancement in conversational

AI with its capacity to produce thoughtful and contextually appropriate responses. Moreover, conversational AI's capabilities were enhanced by the development of multimodal AI, which combined text with other modalities like images, audio, and video. Artificial intelligence (AI) systems are now able to comprehend and provide replies based on a wider range of inputs, emulating more natural human communication thanks to multimodal models like CLIP (Contrastive Language-Image Pretraining). There are a number of opportunities and problems ahead for conversational AI. Enhancing AI systems' comprehension and production of complex, contextually relevant replies continue to be a top priority. The ethical and responsible application of conversational AI, along with resolving privacy and bias concerns, will also be crucial in determining the direction of this technology in the future. In conclusion, machine learning, natural language processing, and multimodal understanding have brought about a remarkable journey for conversational AI, from basic rule-based chatbots to complex, context-aware systems. Conversational AI has the potential to completely change human-computer interaction and a host of other industries, like healthcare and customer service, with further development and research.



Introduction to Gemini AI

Gemini

Gemini AI is a cutting-edge artificial intelligence platform that is revolutionizing the way businesses interact with their customers. In this article, we will explore the features of Gemini AI, how it was introduced to the market, and why it has quickly become a favorite among companies looking to enhance their customer service experience.

What is Gemini AI?

Gemini AI is a sophisticated artificial intelligence platform that leverages the power of machine learning to understand and interact with customers in a personalized way. By analyzing vast amounts of data, Gemini AI can predict customer behavior, tailor responses to individual preferences, and even anticipate future needs. This level of personalization not only increases customer satisfaction but also boosts sales and loyalty.

Features of Gemini AI

One of the key features of Gemini AI is its ability to engage with customers in real-time, providing instant responses to queries and issues. This not only saves time for both customers and businesses but also ensures that customer service is available 24/7.

Furthermore, Gemini AI can seamlessly integrate with existing CRM systems, ensuring that customer data is synchronized across all platforms. Another standout feature of Gemini AI is its natural language processing capabilities. This allows customers to interact with the AI in a conversational manner, making the experience more engaging and personalized. Whether customers are seeking assistance with a product or simply want to chat, Gemini AI can provide a seamless and human-like interaction.

How Gemini AI was Introduced

Gemini AI was initially introduced to the market with a soft launch, targeting businesses in the e-commerce and tech industries. Through word-of-mouth and targeted marketing campaigns, Gemini AI quickly gained traction and garnered attention for its innovative approach to customer service. As more businesses adopted Gemini AI, its reputation as a game-changer in the industry continued to grow.



TANYA GERA
BCA 2ND YEAR

Why Choose Gemini AI?

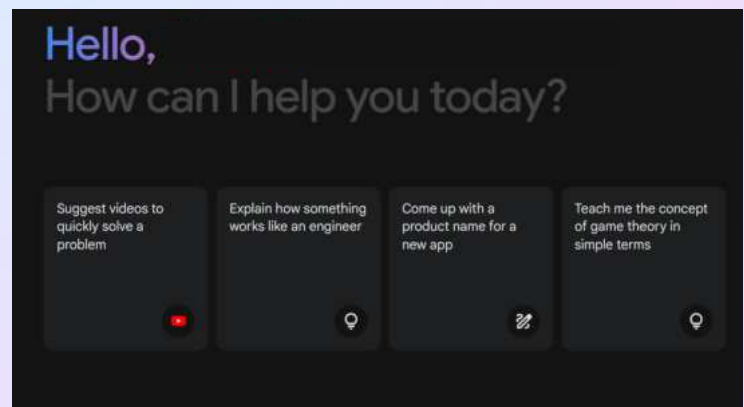
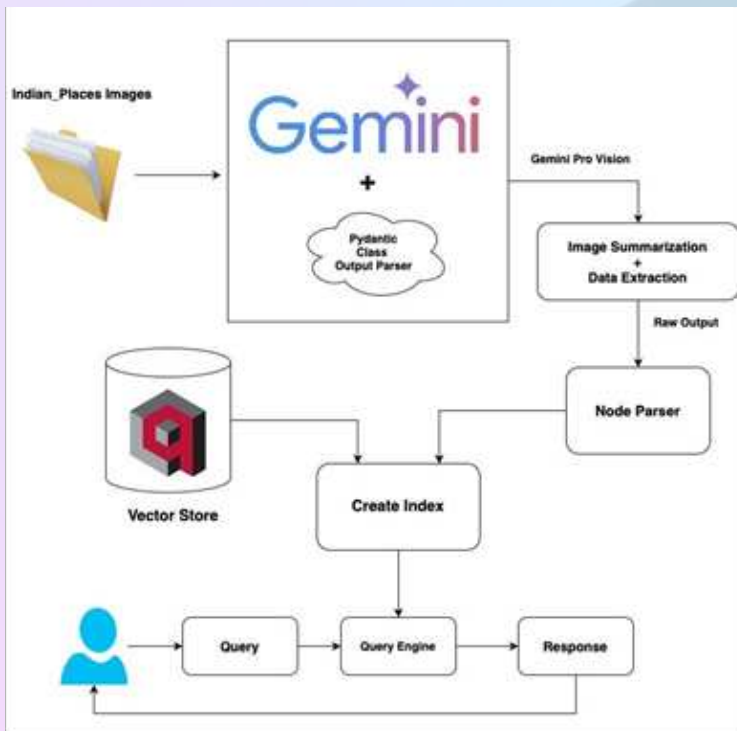
There are several reasons why businesses are choosing Gemini AI as their preferred artificial intelligence platform. Firstly, the level of personalization and engagement that Gemini AI offers is unparalleled, leading to increased customer satisfaction and loyalty. Additionally, the seamless integration with existing systems makes it easy for businesses to adopt Gemini AI without disrupting their current processes. Furthermore, Gemini AI is constantly evolving and improving, thanks to its machine learning capabilities. This means that businesses can stay ahead of the curve and provide cutting-edge customer service that sets them apart from the competition.

With Gemini AI, businesses can unlock new opportunities for growth and success. In conclusion, Gemini AI is a game-changing artificial intelligence platform that is reshaping the way businesses interact with their customers. With its advanced features, seamless integration, and constant innovation, Gemini AI is quickly becoming the go-to choice for companies looking to enhance their customer service experience. If you want to take your customer service to the next level, Gemini AI is the solution you've been looking for.

Conclusion:

Gemini AI is paving the way for a new era of customer service, with its advanced features, seamless integration, and unmatched personalization capabilities.

Businesses that choose Gemini AI are not only staying ahead of the curve but are also setting themselves up for long-term success in an increasingly competitive market. If you're ready to revolutionize your customer service experience, look no further than Gemini AI.



The Implementations of Google Gemini

1. Vertex AI:

Google Gemini can be implemented through Vertex AI, a unified artificial intelligence platform generated by google cloud. It provides a range of tools and services for automating machine learning process and enables serverless integration of various phases of the machine learning lifecycle such as data preparation, model training and evaluation.

2. Generative content:

Google Gemini is used to generate content in response to a query or an instruction. It can generate creative content such as:

- **Creative writing:** It can write scripts and poem for the range of objectives and can also create musical compositions using particular moods and tempos.
- **Generating informative text:** Gemini can assist you to create organized and compelling letters, emails and many more.
- **Code generation:** if you have an idea in your mind then google Gemini can help you commence working on your project by generating code snippets in many different programming languages.

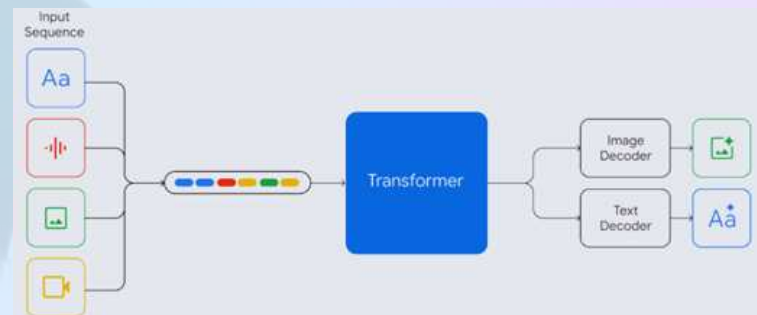
3. Conversational Chatbots:

Gemini has ability to absorb and understand language thus it can be implemented in developing chatbots that can have thorough, educational multi-turn discussions. The capabilities that make Gemini a useful tool to create chatbots are:

- **Natural language processing (NPL):** due to NPL capability of Gemini, it is able to interpret user queries based on what they want

and can alter its response accordingly. It prevents the unnecessary replies and provide a conversational sense.

- **Multi-turn dialogue management:** Gemini maintains the track of the context and history of the conversation in order to provide insightful and relevant answers to the user. This capability help chatbot to successfully meet the user's need.
- **Information retrieval:** Gemini is able to seek and retrieve information from variety of sources in order to provide accurate user responses. This enables Chatbots to act as a beneficial assistant, giving users the information they need.



4. Multimodal data processing:

because of Gemini's proficiency in multimodal data processing, it can handle a large spectrum of data forms, including images and code alongside text. This adaptability offers a number of applications like:

- **Image captioning:** Gemini can generate description of image by analyzing it.
- **Sentiment analysis:** Determine emotional toner of a message by processing image data and text.
- **Question answering with image:** answer your query by examining the image and combining its textual knowledge with the analysis.



SNEHA SHARMA
BCA 2ND YEAR

Google Gemini's strength:

- **Unified Platform Integration:**

Gemini gives marketers a central point to simplify campaign management and optimization by combining Google Display and Video 360, Search Ads 360, and Campaign Manager into a single platform. This integration makes it easier to manage campaigns across several platforms and supports cross-channel marketing strategies.

- **Advanced Audience Targeting:**

Gemini provides sophisticated audience targeting capabilities by utilizing Google's vast data resources and machine learning algorithms. With the ability to accurately target particular demographics, interests, and behaviors, advertisers can make sure that the most relevant audience segments see their commercials.

- **Mechanization and Enhancement:**

Gemini optimizes ad placements, bidding, and targeting in real-time by utilizing automation and machine learning algorithms. With the least amount of manual labor required, Gemini guarantees that marketers receive the greatest results by evaluating large volumes of data and dynamically modifying campaign parameters. By increasing efficiency and streamlining campaign administration, this automation frees up advertisers to concentrate on key priorities.

- **Dynamic Creative Optimization:**

Gemini's dynamic creative optimization capabilities let advertisers create individualized ad experiences for each user. Ads may be made more engaging and convert more users by dynamically modifying their content according

to user demographics, preferences, and behaviors. DCO gives marketers the tools they need to produce more engaging and relevant advertising, which eventually boosts campaign success.

Gemini Restrictions:

- **Learning curve:**

Due to its sophisticated capabilities and intricate UI, advertisers moving to Gemini can endure a learning curve. Although Google offers help and training materials, it could take some time to become proficient with the platform. To maximize Gemini's potential and reduce operational difficulties, advertisers need to make training and educational investments.

- **Limited third-party Integration:**

Although there are no issues with Gemini integrating with Google's advertising technologies, third-party interaction may be limited. It could be difficult for advertisers accustomed to using attribution platforms or third-party analytics to integrate these technologies with Gemini.

- **Adoption Challenges:**

Despite Gemini's advantages, it might take some time for advertisers to adopt it widely. The perceived dangers or uncertainties associated with a new platform may make some advertisers reluctant to adopt it. Furthermore, advertisers who have already made investments in other ad buying platforms might be hesitant to switch to Gemini. In order to overcome these adoption barriers, Google will need to persuasively present Gemini's value proposition and respond to any worries or objections from advertisers.



A Look at Gemini Compared to Other AI Chatbots

Ever since AI chatbots became a thing, there's been a constant battle to see who can create the most helpful and engaging one. Big names like Microsoft and Meta are constantly innovating, but Google recently threw its hat in the ring with Gemini. So, how does Gemini stack up? Let's dive in and see!

What Makes a Great AI Chatbot?

Before we get into specifics, let's establish what makes a great AI chatbot. Here are some key factors:

- **Understanding Your Needs:** Can the chatbot grasp what you're asking and respond accordingly?
- **Going Beyond Keywords:** Does it offer insightful responses or mimic a conversation with a real person?
- **Adapting to Different Situations:** Can it handle various tasks and questions, or is it limited in scope?

Now, Let's Meet the Contenders!

- **Microsoft's Bard:** Bard has been around for a while, known for its factual accuracy and ability to answer complex questions.
- **Ready for a Challenge?** Try asking Bard a trivia question and see how it responds. How well does it explain the answer?
- **Meta's Blender:** Blender is known for its creative side, capable of generating different creative text formats like poems or code.

1. **Feeling Artistic?** Give Blender a prompt and see if it can craft a poem or story for you. Does it capture the essence of your prompt?

2. **Google's Gemini:** The newest player, Gemini boasts being the first "natively multimodal" LLM, meaning it can process different data types like text, code, and images.

3. **Test its Multimodality!** Ask Gemini a question that involves an image, like "What kind of flower is this?" (attaching an image) Can it analyze the image and answer your question effectively?

So, Who Wins? There's no single winner! Each chatbot has its strengths. Bard excels at factual accuracy, Blender shines with creativity, and Gemini's multimodality opens doors for new ways to interact.



The Ultimate Test: Your Needs!

The best AI chatbot for you depends on what you need. Here's a quick guide:

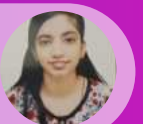
- **Need a reliable answer machine?** Give Bard a try.
- **Feeling inspired?** Spark your creativity with Blender.
- **Looking for an all-rounder with unique data processing abilities?** Then Gemini might be your perfect match.



ChatGPT Vs. Gemini

ChatGPT and Gemini are two distinct technologies, that operate on different domains. Still, both of these technologies have significantly impacted the world concerning their respective fields. ChatGPT is a product of OpenAI, an artificial intelligence company that is known for its advancement in natural language processing (NLP). On the other hand, Gemini is a cryptocurrency exchange platform founded by the Winklevoss twins, offering services for trading various digital assets. ChatGPT, which stands for Generative Pre-trained Transformer, is an AI model designed to comprehend and produce text that resembles human language based on the input it receives. Leveraging the transformer architecture, ChatGPT uses deep learning to process extensive textual data, learning the intricate patterns and nuances of human language. This allows ChatGPT to create coherent and contextually appropriate responses, making it useful for a variety of applications like chatbots, content creation, and language translation. Its capability to simulate human conversation has led to widespread use in fields such as customer service, education, and

entertainment. Gemini is a leading cryptocurrency exchange that enables users to buy, sell, and store digital assets like Bitcoin, Ethereum, and Litecoin. Founded by Cameron and Tyler Winklevoss, Gemini offers a secure and compliant platform for cryptocurrency trading, supported by strong security measures and adherence to regulations. The platform includes various features such as trading tools, wallet services, custody solutions, and a user-friendly interface for both individual and institutional investors. Emphasizing transparency, trust, and regulatory compliance, Gemini has become a trusted choice for cryptocurrency enthusiasts and investors looking for a reliable and secure trading environment. In conclusion, ChatGPT and Gemini represent groundbreaking advancements in their respective fields, offering innovative solutions to meet the evolving needs of users in an increasingly digital world. As AI and blockchain technology continue to mature and evolve, the possibilities for their applications are boundless, promising a future where human-computer interaction and financial transactions are redefined by the power of technology.



Future Directions

Conversational AI with Special Emphasis on Gemini

We all know how trending the era of conversational AI is going. When ChatGPT came in the market, how far it went and is still going. Using ChatGPT for almost every query rather than using our own minds. This will not be shocking to know that ChatGPT currently has around 180.5 million users.

Remember Apple Siri, Alibaba, Cortana, Alexa, when they were new to us and got fascinated by their interactive approach to ChatGPT, Gemini, witnessing remarkable progress in the world of artificial intelligence (AI) over the years. In today's landscape, AI chatbots have transformed into conversational AI systems.

Modern chatbots leverage advanced NLP models like GPT-3 and BERT to engage in natural, dynamic conversations with users. This level of sophistication has expanded their applications across various industries, including healthcare, finance, and e-commerce.

- Conversational AI solutions—including chatbots, virtual agents, and voice assistants—have become extraordinarily popular over the last few years, especially in the previous year, with accelerated adoption due to COVID-19.
- Data from various conversational AI vendors showed that the volume of interactions handled by conversational agents increased by as much as 250% in multiple industries.
- We expect this to lead to much broader adoption of conversational bots in the coming years.

Apart from this, one of Google's most ground breaking AI projects is Gemini, developed by Google

DeepMind. Gemini AI has the potential to revolutionize industries and change the way AI is used in various sectors.

The Future of Gemini AI

Gemini AI represents the future of artificial intelligence, with its unmatched capabilities and continuous evolution. As technology advances and more data becomes available, Gemini AI will become even more powerful and versatile. Its impact on industries like healthcare, finance, and transportation will continue to grow, transforming the way we live and work. One exciting potential for Gemini AI is its integration with Internet of Things (IoT) devices. As IoT devices become more prevalent, Gemini AI can analyze and interpret the vast amounts of data generated by these devices, enabling intelligent automation and predictive capabilities. For instance, companies may progress with advancement with Gemini AI use.

The Impact of Gemini AI on the Future of Artificial Intelligence.

The future of artificial intelligence lies in models like Gemini AI, where advanced capabilities, continuous learning, and seamless integration with other AI systems can unlock new possibilities. With the right approach and considerations, Gemini AI can pave the way for a future where AI enhances our lives, solves complex problems, and drives innovation across industries.



TEJASWINI NAYYAR
BCA 1ST YEAR

OUR TEAM



DR. PRAVEEN ARORA
PROGRAM INCHARGE

DR. PRIYANKA GANDHI
FACULTY INCHARGE



STUDENT INCHARGE



TANYA GERA
BCA YEAR 2 SHIFT 1

VAIBHAVI SHARMA
BCA YEAR 2 SHIFT 1



OUR DESIGNERS



AYUSH GOEL
BCA YEAR 2 SHIFT 1

HARSHIT GOYAL
BCA YEAR 1 SHIFT 1



SAANVI NARULA
BCA YEAR 1 SHIFT 1