



Jagan Institute of Management Studies
3, Institutional Area, Sector-5, Rohini, Delhi-110085

Detail of Classrooms

Annexure IV-(I)





Jagan Institute of Management Studies

3, Institutional Area, Sector-5, Rohini, Delhi-110085

Details of Classroom with teaching aids available

S.No	Room No	Particulars	Program	Teaching Aids
1	C-102	Class Room	BBA-II Year	White Board, Smart Board, wall mounted LCD Projector
2	C-105	Class Room	BCA-II Year	White Board, Smart Board, wall mounted LCD Projector
3	C-202	Class Room	BBA-I Year	White Board, Smart Board, wall mounted LCD Projector
4	C-205	Class Room	BCA-I Year	White Board, Smart Board, wall mounted LCD Projector
5	C-302	Class Room	BBA-III Year	White Board, Smart Board, wall mounted LCD Projector
6	C305	Class Room	BCA-III Year	White Board, Smart Board, wall mounted LCD Projector
7	A-101	Class Room	MCA-I Year	White Board, Smart Board, wall mounted LCD Projector
8	A-201	Class Room	MCA-II Year	White Board, Smart Board, wall mounted LCD Projector
9	A-301	Class Room	BA (Economics) Hons.-I Year	White Board, Smart Board, wall mounted LCD Projector
10	A-302	Class Room	BA (Economics) Hons.-II Year	White Board, Smart Board, wall mounted LCD Projector
11	A-305	Class Room	BA (Economics) Hons.-III Year	White Board, Smart Board, wall mounted LCD Projector

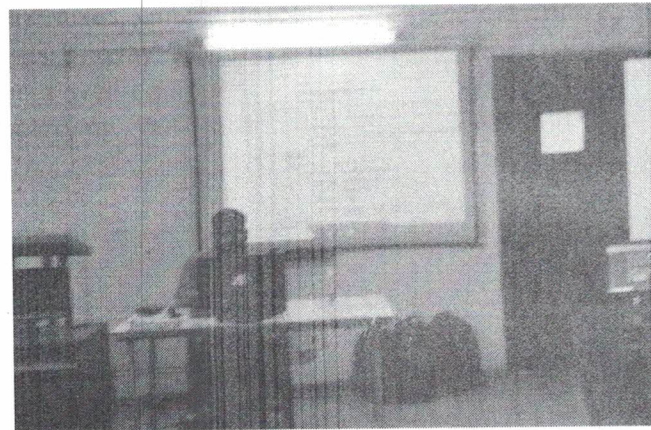
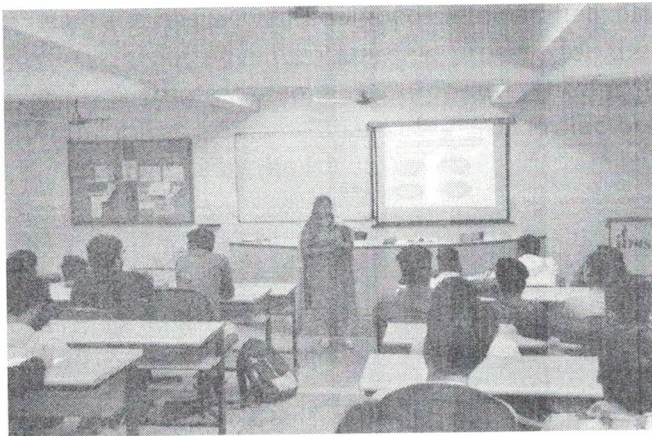
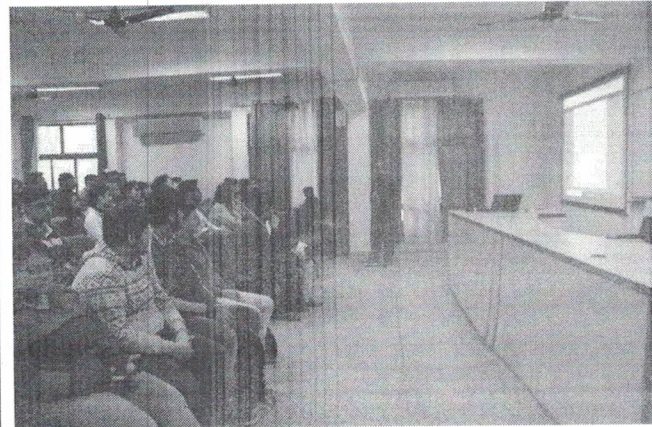
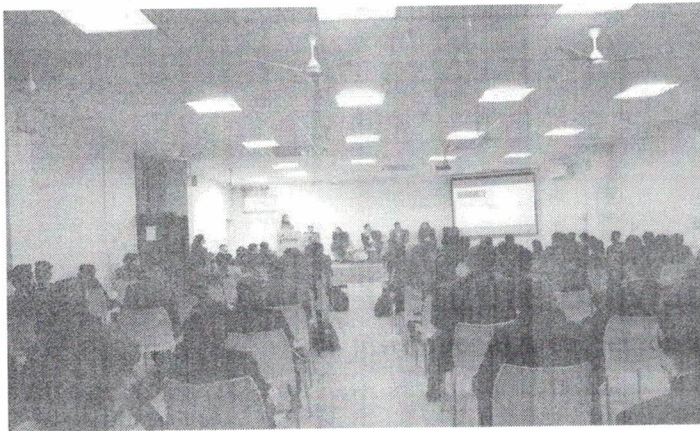




Jagan Institute of Management Studies

3, Institutional Area, Sector-5, Rohini, Delhi-110085

Institute has a well-equipped Seminar hall fitted with mikes, Smart Board, LCD Projectors for carrying out advanced learning process for the students by way of video conferencing with the experts from academia & Corporate. The Institute has a well-equipped conference Room fitted with mikes, Smart Board & LCD Projectors for carrying out interactive discussions and presentations by the Faculty.





Jagan Institute of Management Studies

3, Institutional Area, Sector-5, Rohini, Delhi-110085

Details of availability of LCD Projector along with white board in each class room are as under given below:-

S.No	Model/Make	Qty	Supplier
1	NEC-V260G	6	Ostel Automation
2	Sharp-PGLX2000	1	Accurate Maintenance
3	DELL-12105	1	Accurate Maintenance
4	BENQ-MS 506P	7	Hariom Technology
5	BENQ-MS 506P	6	Hariom Technology
6	BENQ-MS 506P	5	Hariom Technology
7	OPTOMA-S-341	6	Accurate Maintenance
8	View Sonic. PJD 535ILS	4	Accurate Maintenance
9	View Sonic. PJD 535ILS	1	Accurate Maintenance



Jagan Institute of Management Studies

3, Institutional Area, Sector-5, Rohini, Delhi-110085

Interactive Boards with Screens

The institute has installed 20 nos. of interactive boards. The teacher places a small bar on the dry erase boards they already have, push two buttons and just like that a full featured interactive white board, spend less without getting less.

List of Interactive/Digital Boards Available

S.No	Make/Model No	Configuration	Qty
1	Vama /SGIW-781RS (G+)	Physical Size: 1785mm9w)X1195M(H) X30.5 (T)mm+-2mm Interactive Screen area: 1652mm(W)X1126mm(H)+-2mm Screen surface: Hard-coated steel surface, optimized for projection compatible with dry erase marker and water based pen	5
2	Vama /SGIW-781RS (G+)	Physical Size: 1785mm9w)X1195M(H) X30.5 (T)mm+-2mm Interactive Screen area: 1652mm(W)X1126mm(H)+-2mm Screen surface: Hard-coated steel surface, optimized for projection compatible with dry erase marker and water based pen	1
3	Vama /SGIW-781RS (G+)	Physical Size: 1785mm9w)X1195M(H) X30.5 (T)mm+-2mm Interactive Screen area: 1652mm(W)X1126mm(H)+-2mm Screen surface: Hard-coated steel surface, optimized for projection compatible with dry erase marker and water based pen	6
4	Vama /SGIW-781RS (G+)	Physical Size: 1785mm9w)X1195M(H) X30.5 (T)mm+-2mm Interactive Screen area: 1652mm(W)X1126mm(H)+-2mm Screen surface: Hard-coated steel surface, optimized for projection compatible with dry erase marker and water based pen	6
5	Vama /SGIW-781RS (G+)	Physical Size: 1785mm9w)X1195M(H) X30.5 (T)mm+-2mm Interactive Screen area: 1652mm(W)X1126mm(H)+-2mm Screen surface: Hard-coated steel surface, optimized for projection compatible with dry erase marker and water based pen	1
6	88 GENE	Projection Area: 1880X 1165mm Frame Size: 2110X1259X34mm Surface: Porcelain coated	1





Jagan Institute of Management Studies

3, Institutional Area, Sector-5, Rohini, Delhi-110085



Photograph of Class room A-101 for MCA -I





Jagan Institute of Management Studies

3, Institutional Area, Sector-5, Rohini, Delhi-110085



Photograph of Class room A-201 for MCA II





Jagan Institute of Management Studies

3, Institutional Area, Sector-5, Rohini, Delhi-110085



25 Nov 2023 11:06:43

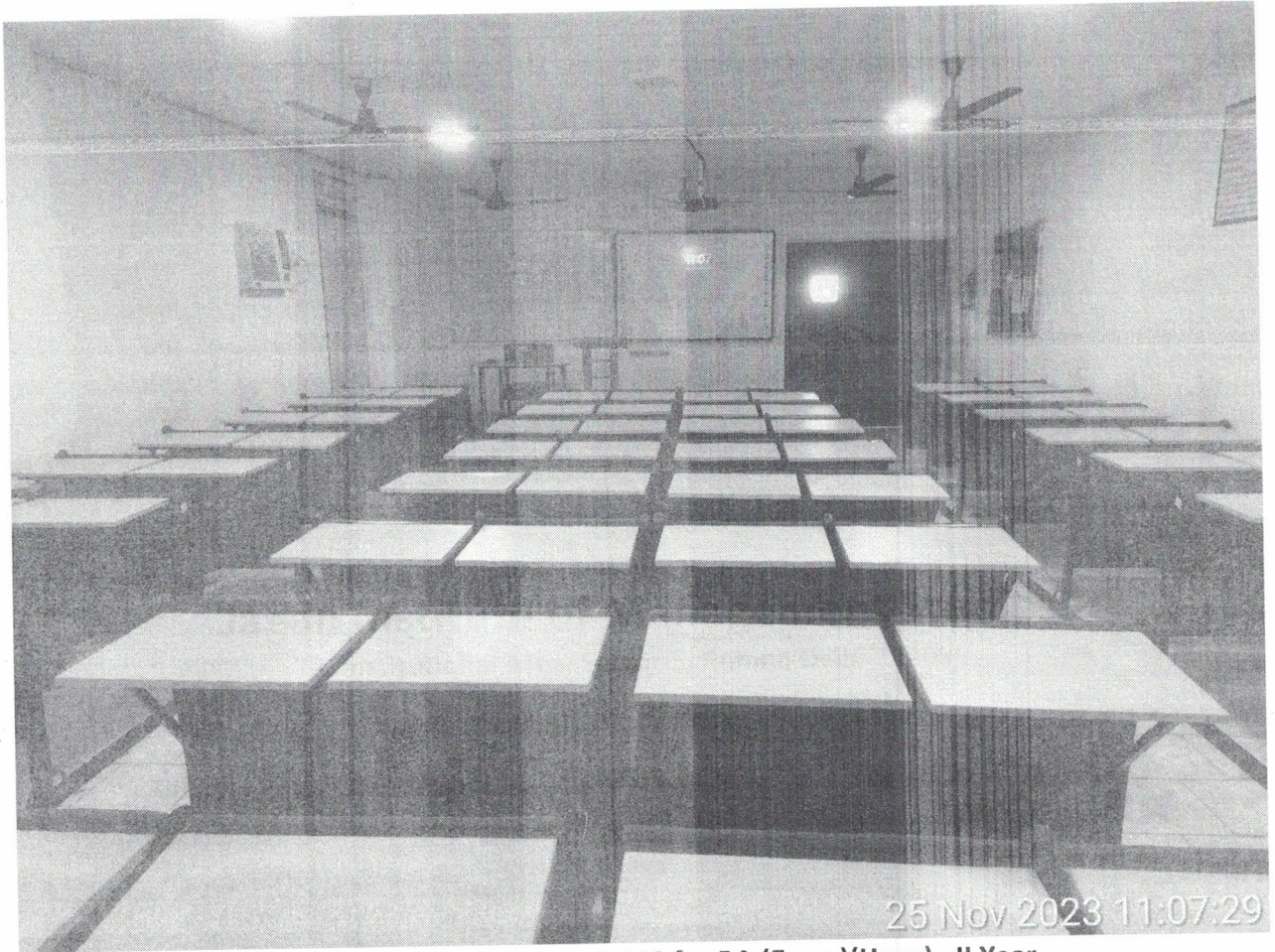
Photograph of Class room A-301 for BA (Econ.)(Hons) –I Year





Jagan Institute of Management Studies

3, Institutional Area, Sector-5, Rohini, Delhi-110085



25 Nov 2023 11:07:29

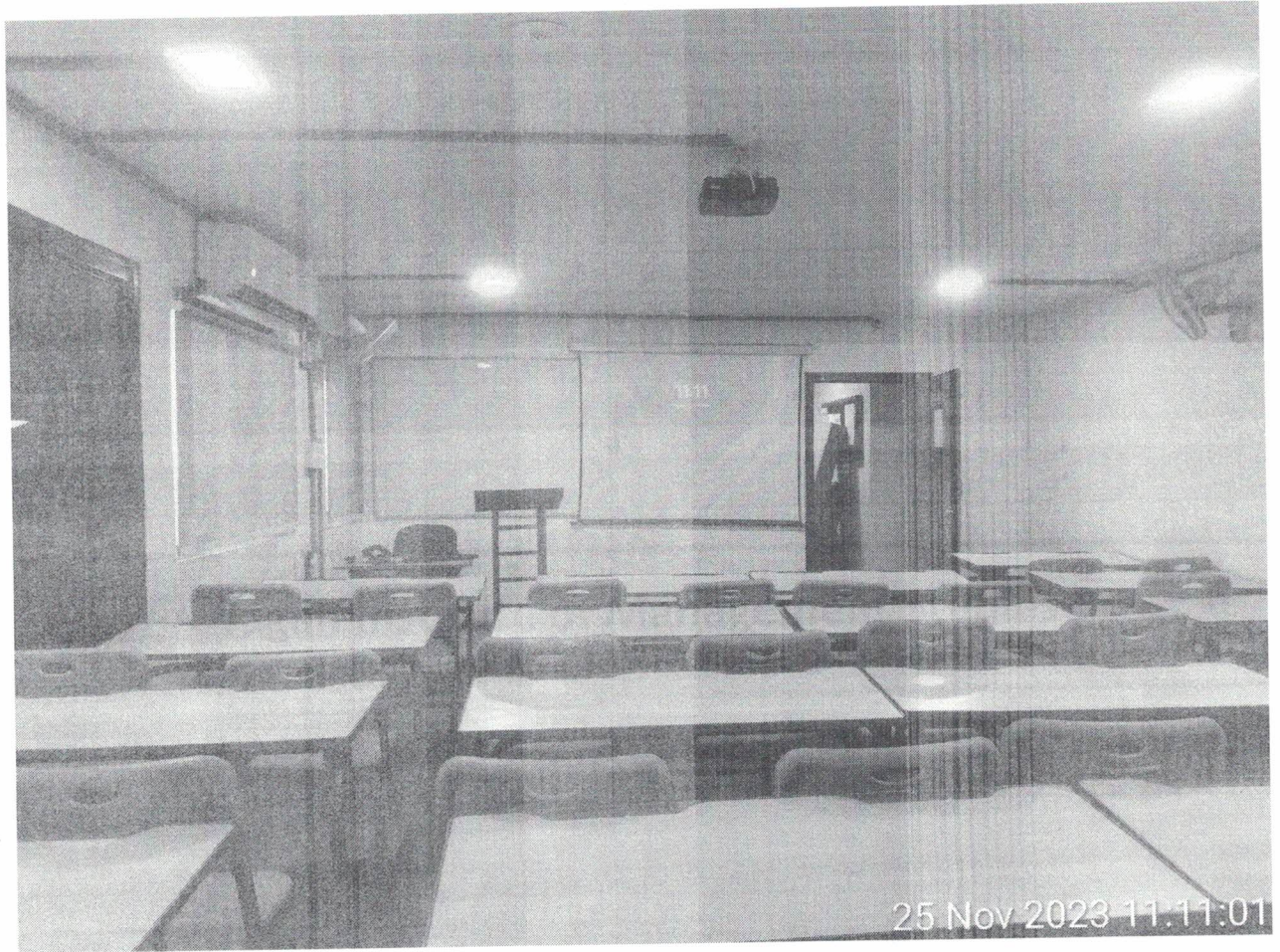
Photograph of Class room A-302 for BA (Econ.)(Hons) –II Year





Jagan Institute of Management Studies

3, Institutional Area, Sector-5, Rohini, Delhi-110085



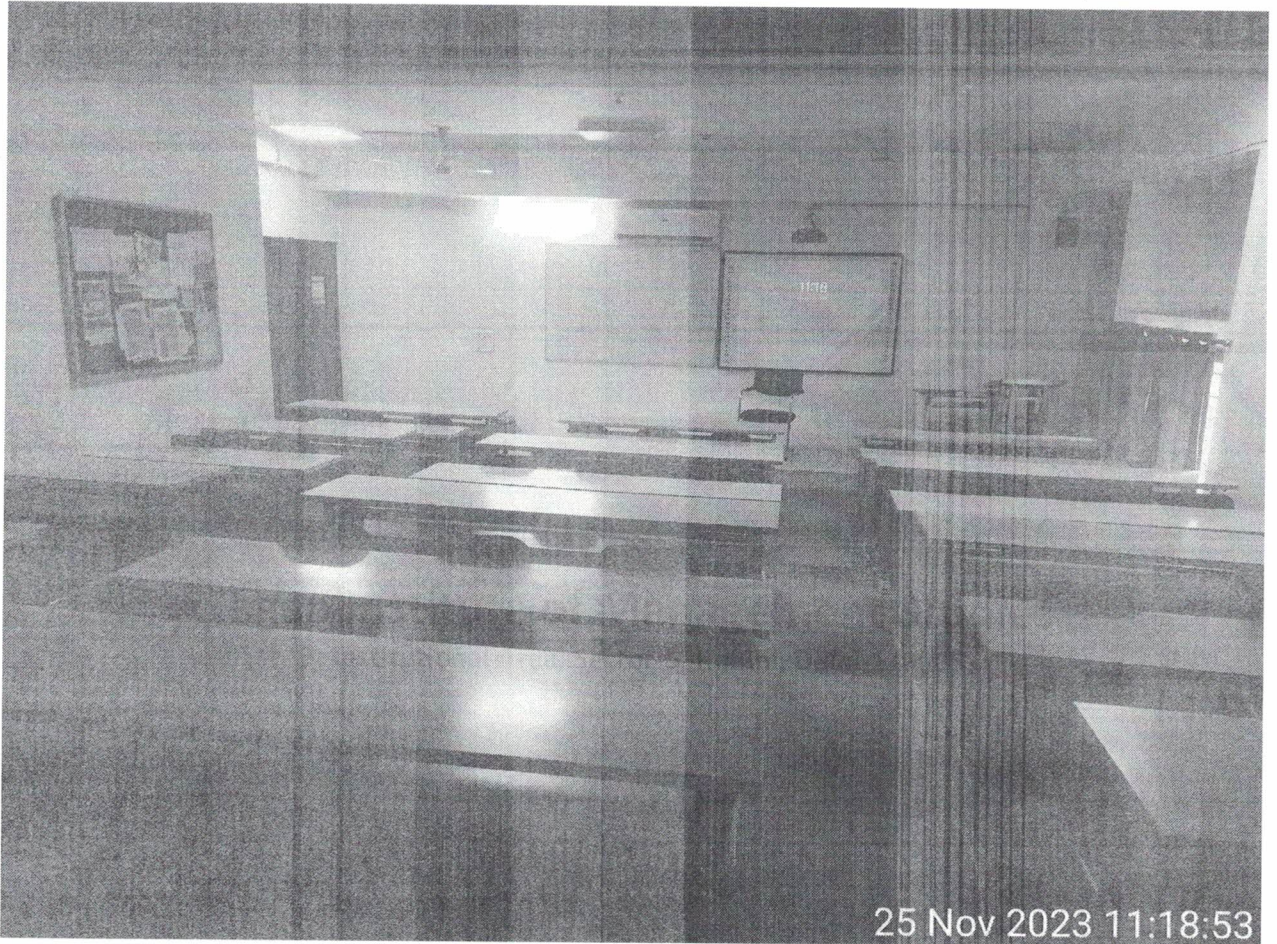
Photograph of Class room A-305 for BA (Econ.)(Hons) –III Year





Jagan Institute of Management Studies

3, Institutional Area, Sector-5, Rohini, Delhi-110085



25 Nov 2023 11:18:53

Photograph of Classroom C-205 for BCA I Year





Jagan Institute of Management Studies

3, Institutional Area, Sector-5, Rohini, Delhi-110085



Photograph of Classroom C-202: BBA-I Year





Jagan Institute of Management Studies

3, Institutional Area, Sector-5, Rohini, Delhi-110085



Photograph of classroom C-305 BCA-III Year





Jagan Institute of Management Studies

3, Institutional Area, Sector-5, Rohini, Delhi-110085



Photograph of classroom C-102; BBA-II Year





Jagan Institute of Management Studies

3, Institutional Area, Sector-5, Rohini, Delhi-110085



Photograph of classroom C-105; BCA-II year





Jagan Institute of Management Studies

3, Institutional Area, Sector-5, Rohini, Delhi-110085



Photograph of classroom; C-302; BBA-III Year

